

# D-BOX Adaptor Kit (Rev. 2)



## Assembly Manual Version 1.0

# Package Contents

Quantity	Description
1	D-BOX Adaptor Plate
8	D-BOX Actuator Brackets
6	VR3 Foot Locators
8	M5x10 Buttons Head Cap Screws
8	M5 Washers
28	M6x25 Button Head Cap Screws
28	M6 Nyloc Nuts
56	M6 Washers
8	1/2" P-Clips
10	Cable Ties
2	2m Corrugated Split Tubing
2	55cm Corrugated Split Tubing
1	2m Ethernet Cable

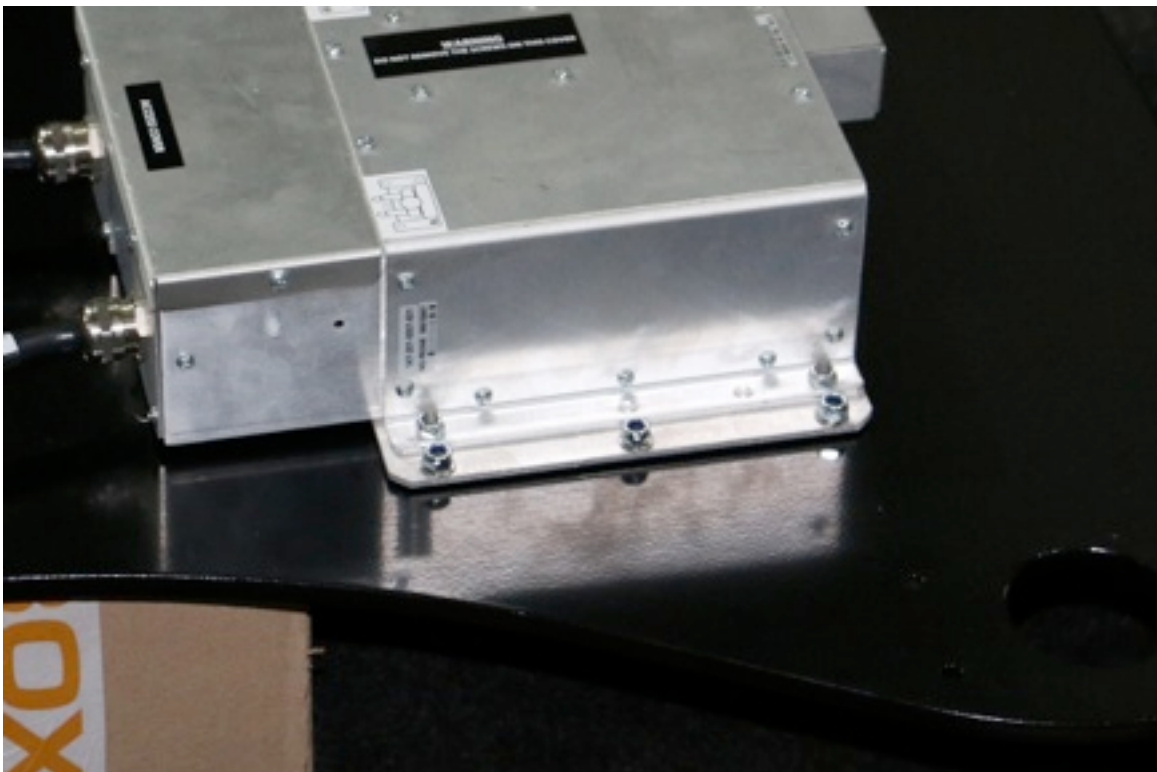


# 1. Mounting the Left D-BOX ACM

- 1.1. Lay D-BOX Adaptor Plate across a D-BOX Actuator Carton to elevate it off the assembly surface with the M5 Screw Heads facing up. Position the Left D-BOX ACM over the 6 mounting holes located towards the front of the D-BOX Adaptor Plate as shown.



- 1.2. Secure the Left D-BOX ACM to the D-BOX Adaptor Plate using 6 M6x25 Button Head Cap Screws, 12 M6 Washers & 6 M6 Nyloc Nuts (the Screws should be inserted from the bottom and Nyloc Nuts fastened on the top as shown)

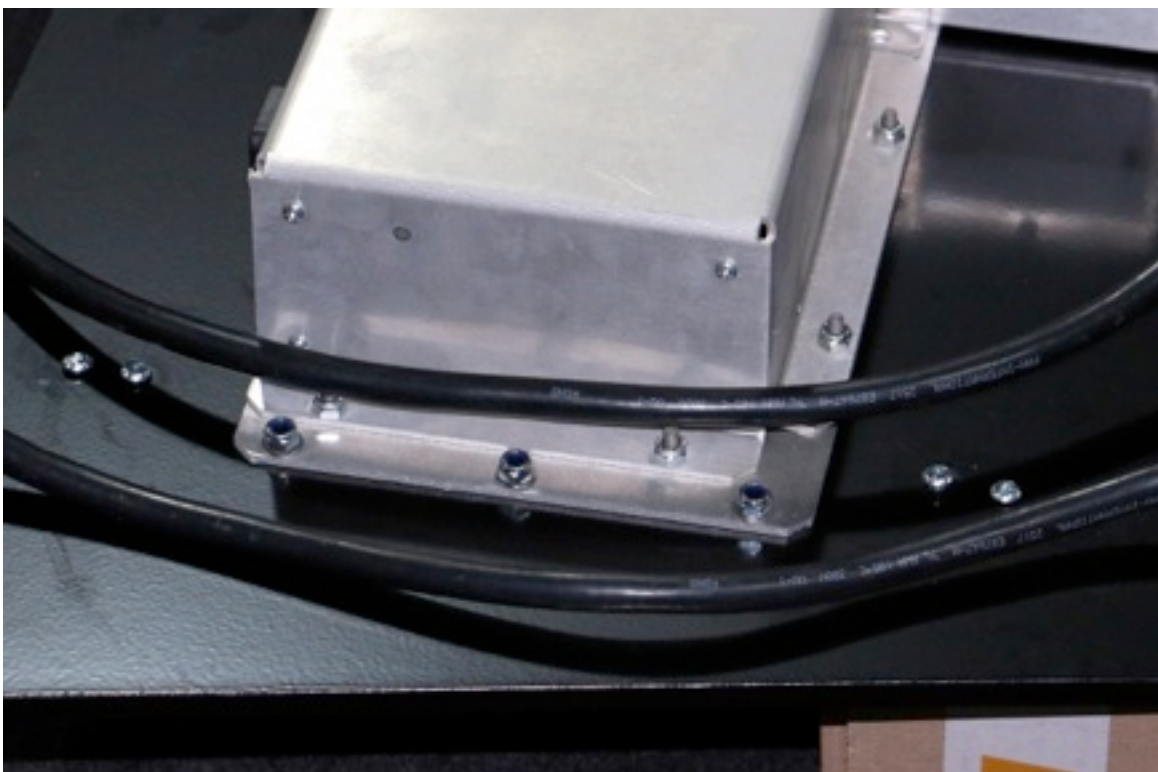


## 2. Mounting the Right D-BOX ACM

- 2.1. Position the Right D-BOX ACM over the 6 mounting holes located towards the rear of the D-BOX Adaptor Plate as shown.



- 2.2. Secure the Right D-BOX ACM to the D-BOX Adaptor Plate using 6 M6x25 Button Head Cap Screws, 12 M6 Washers & 6 M6 Nyloc Nuts (the Screws should be inserted from the bottom and Nyloc Nuts fastened on the top as shown)

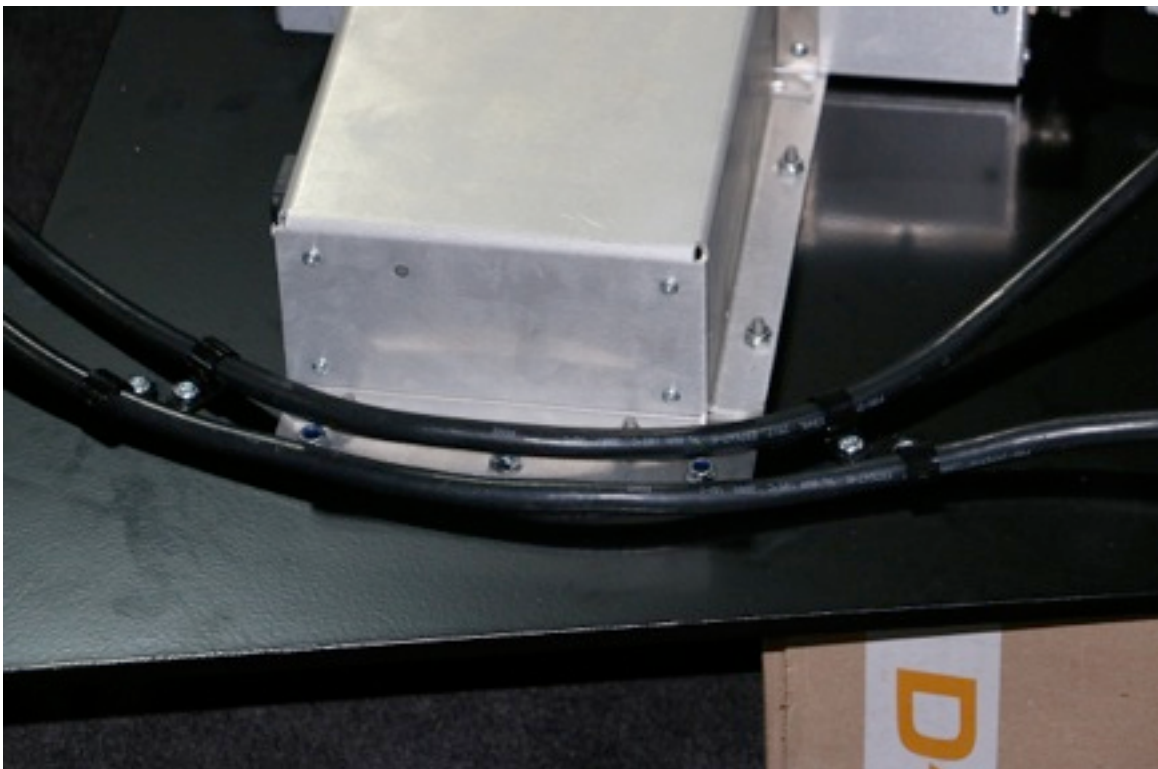


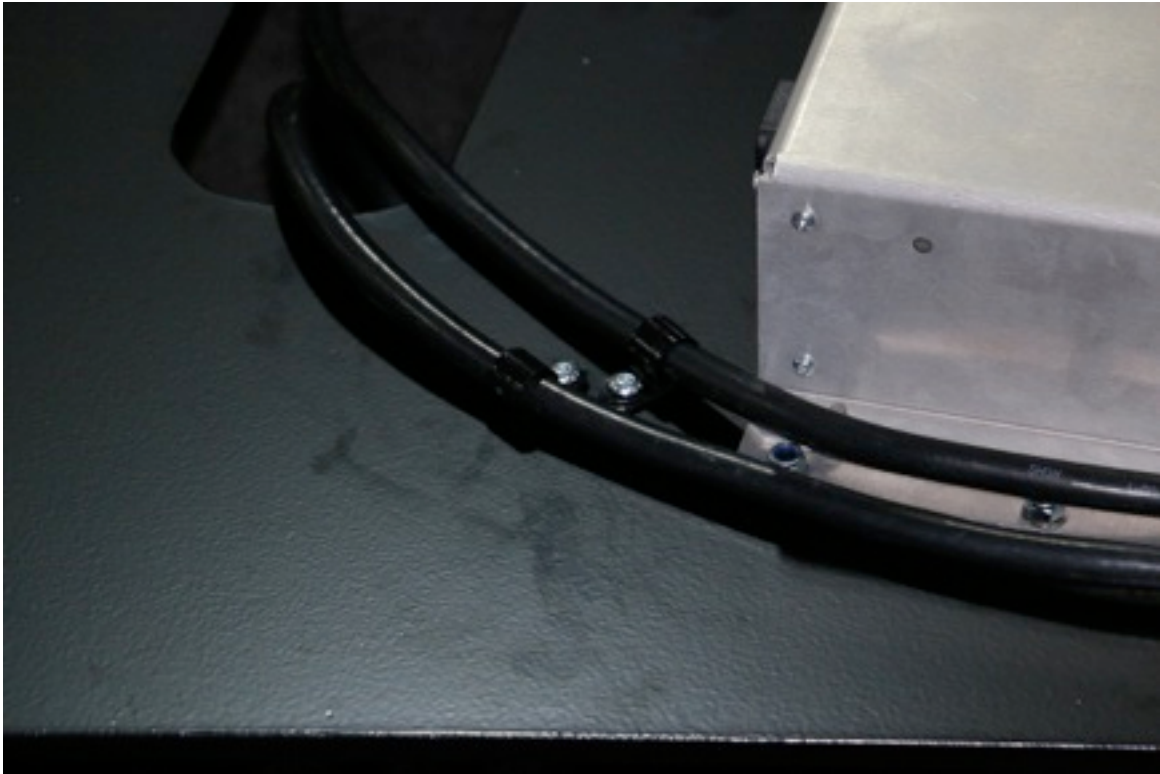
### 3. Routing the Actuator Cables

- 3.1. Arrange the cables as shown in the image below and lower the actuators through the large holes at the front and rear of the D-BOX Adaptor Plate.



- 3.2. Using the 1/2" P-Clips and M5x10 Button Head Cap Screws, secure the actuator cables to the D-BOX Adaptor Plate as shown.





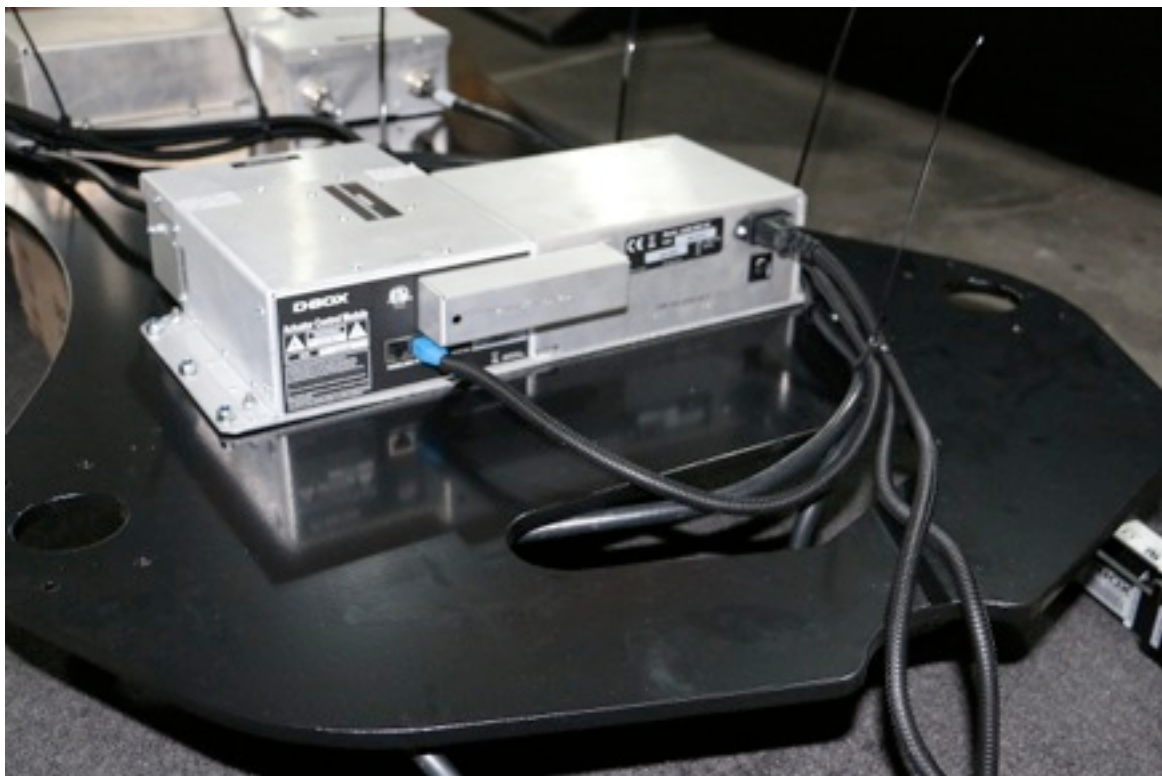
## 4. Routing the Ethernet and Power Cables

- 4.1. Insert the Right (Rear) Actuator power cable into a piece of 2m Corrugated Split Tubing and run the power cable and 2m Ethernet cable from the Right (Rear) Actuator to the Left (Front) Actuator as shown. Use the Cable Ties secure the Power and Ethernet cable to the Actuator cables as shown. Save two of the Cable Ties to tidy up the final cabling at the end.





- 4.2. Insert the Left (Front) Actuator power cable into a piece of 55cm Corrugated Split Tubing and run the power cable to the front of the D-BOX Adaptor Plate as shown.



## 5. Mounting the Actuators

- 5.1. Attach the D-BOX Actuator Brackets to the Actuators using the Hex Head Screws and Spring Washers supplied with the D-BOX System as shown (leave the bolts loose until you have mounted the brackets to the D-BOX Adaptor Frame. Repeat this step on all four actuators).



- 5.2. Ensuring the cables are pointed towards the front of the D-BOX Adaptor Plate, insert the actuators (from the bottom) into the round holes in each corner of the D-BOX Adaptor Plate and secure to the D-BOX Adaptor Plate using the M6x25 Button Head Cap Screws, M6 Washers and M6 Nyloc Nuts as shown.





- 5.3. Once all four actuators are mounted to the D-BOX Adaptor Plate, tighten all of the D-BOX Actuator Bracket bolts and cut the ends off all of the Cable Ties so it looks like the image below.



## 6. Attach the Front Ethernet Cable

- 6.1. Insert the Front Ethernet Cable (supplied with the D-BOX System) into a piece of 55cm Corrugated Split Tubing. Plug the Ethernet Cable into the remaining Ethernet port in the Left (Front) ACM and run the cable to the front of the D-BOX Adaptor Plate.



- 6.2. Using the two remaining Cable Ties, tie the two Ethernet Cables and all of the cables exiting the front of the D-BOX Adaptor Plate as shown.



## 7. Mounting the VR3 Rig to the D-BOX Adaptor Plate

- 7.1. Remove the D-BOX Carton from underneath the D-BOX Adaptor Plate and flip the plate over so it is standing upright on the actuators as shown. The aluminium feet supplied with the D-BOX System can be added under each actuator to ensure the product doesn't slide around on the floor.



- 7.2. Place the VR3 Rig on top of the D-BOX Adaptor Plate and position it in the centre of the plate, ensuring the actuator cables run neatly under the VR3 Rig's tubes and are not crushed by the feet.



## 8. Mounting the VR3 Foot Locators

- 8.1. Peel the red plastic off the bottom of a VR3 Foot Locator exposing the VHB adhesive mounting tape as shown.



- 8.2. Carefully stick a foot locator under each of the VR3 Rig's feet ensuring not to stick the VR3 Foot Locator down until you are sure it is in the correct position. Repeat this step with each of the VR3 Rig's feet until all 6 VR3 Foot Locators are in place.



- 8.3. To complete the assembly apply downward pressure over each of the VR3 Rig's feet to ensure each of the VR3 Foot Locators is stuck firmly to the D-BOX Adaptor Plate.